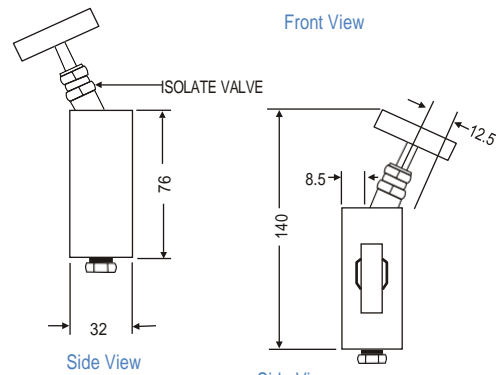
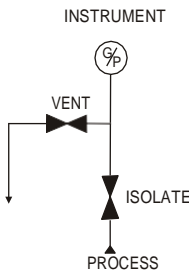
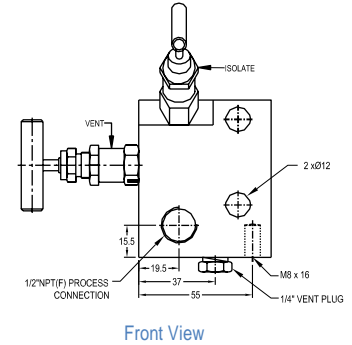
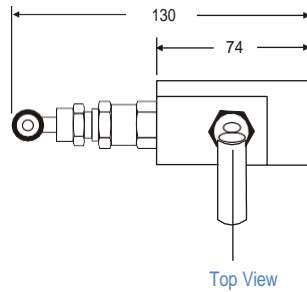
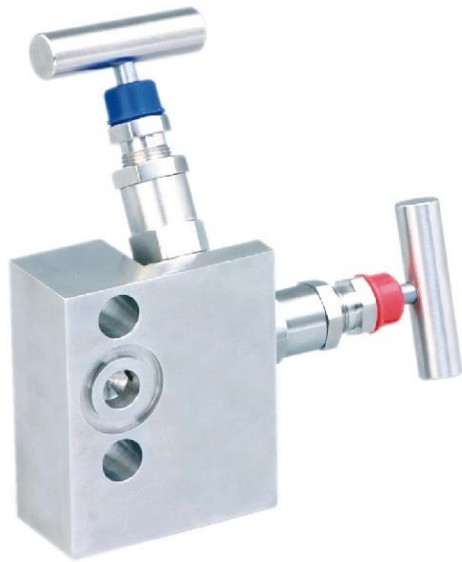


## TWO VALVE MANIFOLDS

### DIRECT MOUNT (Pipe to Flange)

With threaded horizontal port inlet with a Flange outlet instrument connection. A vent/test port on base. The venting bonnet is positioned on the left hand side and the isolating bonnet angular on the top.



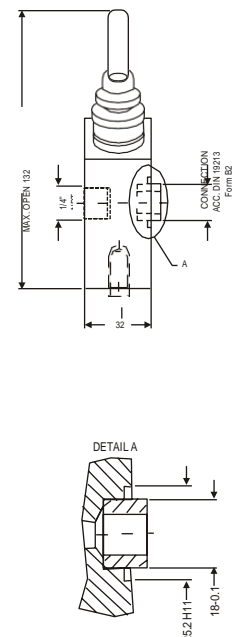
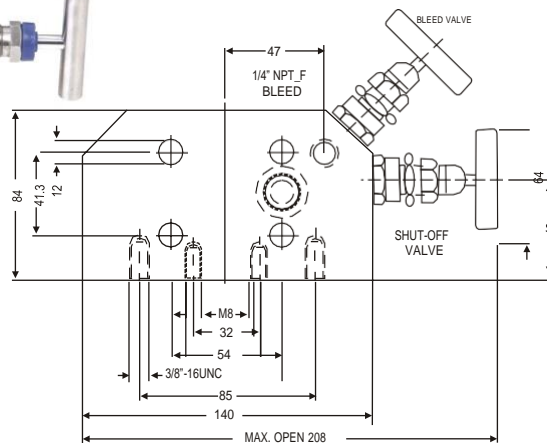
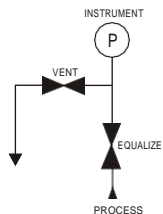
#### Standard connection

Product	Process Side	Instrument Side	Vent/Test
IPS-MV-PF2-01	1/2" NPT female	Flanged	1/4" NPT female

### DIRECT MOUNT (Pipe to Flange)

**IPS-MV-PF2-02**

Two valve manifold especially designed to suit FR 3051 transmitters with inlet NPT female, outlet Flange to DIN 19213 FORM B2. The coplanar manifold when assembled to transmitter has the advantage of compact size with easy for operation in minimum space. The direct mounting facility to the base of the differential pressure transmitter result in less leakage points and more accurate measurements.



#### Standard connection

Product	Process side	Instrument side	Vent/Test
IPS-MV-PF2-02	1/2" NPT female	Coplanar (DIN 19213 Form B2)	1/4" NPT female

For Further details please contact factory.

### Specifications - Standard version: IPS-MV-PF2-01, IPS-MV-PF2-02, IPS-MV-PF2-03

Body	: SS 316
Stem	: SS 316
Valve assembly	: SS 316
'T' bar handle	: SS 304
Maximum working pressure	: 6000 PSI
Maximum working temperature	: 240°C
Packing	: PTFE
Type of stem	: Type CT; Stem with conical metal tip
Drain port	: 1/4" NPT [F]; provided with SS 316 plug
Bracket mounting holes	: 2 Nos.
Hard Chrome plating	: Provided on stem tip.

### How to order : IPS-MV-PF2-01, IPS-MV-PF2-02

Body Material	Stem Type	Stem Packing	Size = Inlet x Outlet	Connections	Threads
C = Carbon Steel	CT	P = PTFE	2F = 1/4"x Flange	MF = Male x Female	N = NPT (ANSI B 1.20.1)
S = SS 316	DS	G = Grafoil	3F = 3/8"x Flange	FF = Female x Female	P = BSPP (BS 2779, ISO 228/1)
S4 = SS 304			4F = 1/2"x Flange	SW = Socket weld	B = BSPT (BS 21, ISO 7/1)
SL = SS 316L			4C = 1/2"x Coplanar	FM = Female x Male	
M4 = Monel 400				FC = Female x Colpanar	
M5 = Monel 500					
H = Hastelloy C					

#### Options -

- IE : Handle circular.
- TF : Compliance to NACE standard MR-0175.
- SG : For Oxygen service, valves are supplied cleaned, degreased and suitably packed.
- GH : Material test certificate
- GO : Hydro test certificate
- MB : Mounting Bracket
- MBC : Mounting bolts (7/16" UNF) in carbon steel (Model : MBC - M45, MBC - M25)
- MBS : Mounting bolts (7/16" UNF) in SS (Model : MBS - M45, MBS - M25)
- PRF : PTFE Ring For Flange Seal
- GRF : Grafoil Ring For Flange Seal
- ATV : Anti Tamper valve
- ATK : Anti Tamper key

#### Example

To place an order simply refer to the codes in the table.

Valve Type : Body Material + Stem Packing + Size + Connection + Threads + Options

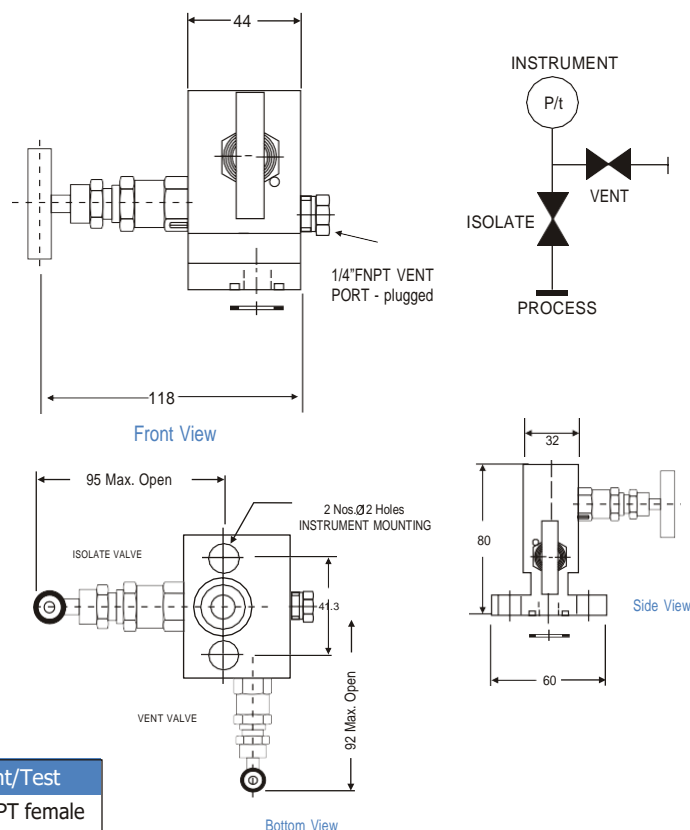
#### NOTE:

- The weld prepared types are available with female plain end - suitable for socket weld.
- Anti-tamper bonnet - special design on request with locking arrangement if desired.

# TWO VALVE MANIFOLDS

IPS-MV-PF2-01

With threaded horizontal port inlet on the front side and Flange outlet on the back side, test connection on the body. The isolating bonnet are positioned on the left and right hand side and the Equalizing Bonnet is positioned on the top.



### Standard connection

Product	Process side	Instrument side	Vent/Test
IPS-MV-PF2-03	1/2" NPT female	Flange	1/4" NPT female

### Specifications - Standard Version IPS-MV-PF2-03

Body	: SS 316
Stem	: SS 316
Valve assembly	: SS 316
'T' bar handle	: SS 304
Maximum working pressure	: 6000 PSI
Maximum working temperature	: 240°C
Packing	: PTFE
Type of stem	: Type CT; Stem with conical metal tip
Drain port	: 1/4" NPT [F]; provided with SS 316 plug
Hard Chrome plating	: Provided on stem tip

### How to order : I P S - M V - P F 2 - 0 3

Body Material	Stem Type	Stem Packing	Size = Inlet x Outlet	Connections	Threads
C = Carbon Steel	CT	P = PTFE	2F = 1/4" x Flange	FD = Female x Flange	N = NPT (ANSI B 1.20.1)
S = SS 316	DS	G = Grafoil	3F = 3/8" x Flange		P = BSPP
S4 = SS 304			4F = 1/2" x Flange (std)		(BS 2779, ISO 228/1)
SL = SS 316L					B = BSPT (BS 21, ISO 7/1)
M4 = Monel 400					
M5 = Monel 500					
H = Hastelloy C					