

DIAPHRAGM SEAL



DIRECT COUPLED TYPE

SPECIAL FEATURES

- ROBUST TWO PIECE DESIGN
- THE DIAPHRAGM IS WELDED TO THE BODY TO ENSURE SEPARATION OF THE FILLING FLUID FROM THE PROCESS MEDIUM
- ALL SS CONSTRUCTION

IPS-DS-01

APPLICATIONS

DIAPHRAGM SEALS ARE DESIGNED TO ISOLATE THE SENSING ELEMENT OF PRESSURE GAUGES AND PRESSURE SWITCHES FROM PROCESS FLUIDS THAT THEY MAY BE CORROSIVE, VISCOUS, SEDIMENTOUS AND / OR WITH A HIGH TEMPERATURE.

SPECIFICATIONS

STANDARD VERSION

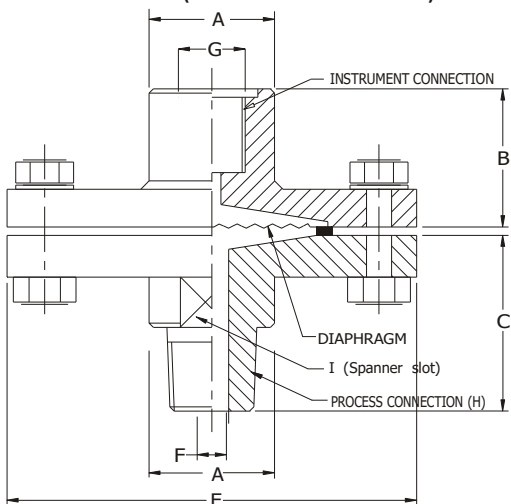
Seal Type	: S06 = -1 to 0 kg/cm ² & 0 to 70 kg/cm ² (Standard)
	: S07 = 100 kg/cm ² to 400 kg/cm ²
Process Temperature	: - 40 °C to 200 °C or as per fill fluid
Instrument Connection	: ½" BSP (F)
Process Connection	: ½" BSP (M)
Fill Fluid	: Silicon Oil - DC 200
Mounting	: Direct (Without capillary)



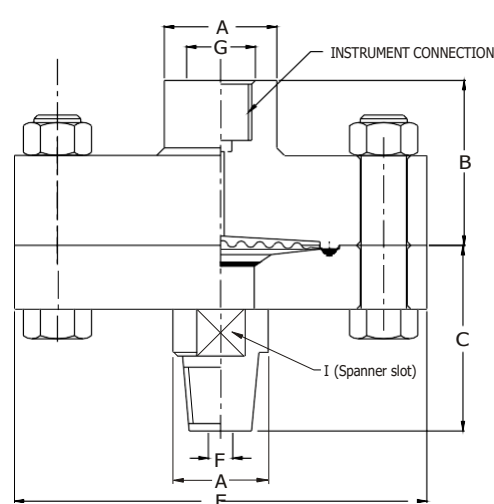
Diaphragm	: AISI 316L SS
Top Chamber	: AISI 304 SS
Bottom Chamber	: AISI 316 SS
Nuts / Bolts	: AISI 304 SS
Sealing Gasket	: PTFE

DIMENSIONS - STANDARD VERSION

TYPE "S06" (STANDARD VERSION)



TYPE "S07"



A	~ B	~ C	E	F	G	H	I	Approx. Wt. #
30	26	47	98	Ø8	½" BSP(F)	½" BSP (M)	25	1500.0

(# Weight in grams with box for Standard Model.)

A	~ B	~ C	E	F	G	H	I	Approx. Wt. #
30	44	49.5	110	Ø8	½" BSP(F)	½" BSP (M)	25	3000.0

(# Weight in grams with box for Standard Model.)

Notes : • Drawings are not to scale. • All Dimensions are in mm.



Industrix Precise Solutions Private Limited

Room No – 303, Bhumika Residency, Plot No-21, Sector-20, Roadpali, Kalamboli, Panvel (Tal.), Raigad (Dist.), Maharashtra, India – 410218.

Mobile: +91 99309 98399 / +91 99674 97447

E-mail: admin@ipspl.in / sales@ipspl.in Website: www.ipspl.in

CIN : U52399MH2021PTC368555



HOW TO ORDER

BASIC MODEL

CODE

OPTIONAL EXTRAS

[It is recommended that the MOC of Diaphragm should be equivalent or superior than the MOC of Bottom chamber.]

TYPE

S06 -1 to 0 kg/cm² & 0 to 70 kg/cm² (Standard) **S07** 100 kg/cm² to 400 kg/cm²

(Select this option when dry seal is required)

INSTRUMENT CONNECTION

VN 1/4" BSP(F) **VP** 3/8" BSP (F) **VL** 1/2" BSP (F)(Standard) **VM** 1/2" NPT (F) **VO** 1/4" NPT (F)

TOP CHAMBER

XY AISI 316 SS

XW AISI 304 SS (Standard) **YA** AISI 316L SS

DIAPHRAGM (* Range up to 21 kg/cm²)

UJ AISI 316L SS (Standard)

UL HASTELLOY 'C'

UR TITANIUM

UW INCONEL 600

UM MONEL

UP SILVER*

UQ TANTALUM

YR METAL

SEALING GASKET

VI PTFE (Standard)

BOTTOM CHAMBER (* Refer Pressure v/s Temperature table below.)

TK AISI 304 SS

TT HASTELLOY 'C'

TM AISI 316 SS (Standard)

TD TANTALUM

TL AISI 316L SS

TZ PVC*

UH TITANIUM

UA PVDF*

TX MONEL

TY POLYPROPELENE*

MOC OF BOTTOM CHAMBER	PRESSURE V/S TEMPERATURE					
	20 °C	40 °C	60 °C	80 °C	100 °C	120 °C
PVDF	10 kg/cm ²	10 kg/cm ²	10 kg/cm ²	7 kg/cm ²	4 kg/cm ²	2 kg/cm ²
PP	10 kg/cm ²	10 kg/cm ²	6 kg/cm ²	4 kg/cm ²	1 kg/cm ²	NA
PVC	10 kg/cm ²	10 kg/cm ²	4 kg/cm ²	1 kg/cm ²	NA	NA

PROCESS CONNECTION

WE 1/4" BSP(F)

WI 1/4" NPT (F)

WY 1/4" NPT(M)

WS 1/4" BSP(M)

WR M20 x 1.5(M)

WC 3/8" BSP(F)

WH 1/2" NPT (F)

WA 1/2" NPT(M)

WT 3/8" BSP(M)

WP M33 x 1.5(M)

WD 1/2" BSP(F)

WL 3/4" NPT(F)

WK 3/4" NPT(M)

WU 1/2" BSP(M) (Standard)

WJ 3/4" BSP(F)

WF 3/4" BSP(M)

Note : Connections like Metric, PT/ PF/ Flaired / UNF/ G/ R etc can be provided on request.

PROTECTION ON WETTED PARTS (* With bore diameter 10 mm minimum & for connection size 1/2" & above only.)

VS PTFE LINING ON BOTTOM CHAMBER - 2 mm THICK (Max. Up to 150 °C)*

VV PTFE PROTECTION FOR DIAPHRAGM (Max. Up to 150 °C) (Suitable for Pressure Ranges only)

VZ PTFE COATING ON DIAPHRAGM (Max. Up to 315 °C)

FILLING FLUIDS (* Consult factory for specifications, price and delivery.)

US FLUROLUBE 4.2 [-45 to 175 °C]

UY SILICON DC 704 [10 to 337 °C]

UT FLUROLUBE 6.3 [-40 to 235 °C]

UZ SILICON DC 710 [7 to 371 °C]

UU FLUROLUBE FS-5 [-28 to 148 °C]

VA SYL THERM 800 [-40 to 315 °C]

UV FOOD GRADE OIL [-20 to 140 °C]

VB SYL THERM XLT [-100 to 260 °C]

UX SILICON DC 200 [-40 to 205 °C] (Standard)

VC HALOCARBON OIL*

REMOTE MOUNTING (With capillary of Max. Up to 6 Mtrs.)

SPECIFY IN METERS (e.g. 1.5 = 1.5 METERS 2.0 = 2 METERS)

CAPILLARY

PE AISI 304 SS

PG AISI 316 SS

CAPILLARY COVERED WITH ARMOUR (Applicable with PE or PG if selected)

PF AISI 304 SS

PH AISI 316 SS

PI PVC (Ambient Temp. Max. 60°C)

OTHER OPTIONS

TB HELIUM LEAK TEST

TC DRY SEAL ONLY WITHOUT INSTRUMENT

GH MATERIAL TEST CERTIFICATES*

* MATERIAL TEST CERTIFICATES WILL BE PROVIDED FOR WETTED PARTS ONLY WITH CHEMICAL COMPOSITION TESTING. FOR OTHERS, PLEASE CONSULT FACTORY.

Refer Datasheet EE for selection of Flushing Rings.

Note : Specifications and dimensions given in this product catalogue represents the state of engineering at the time of printing.

Modifications may take place and materials specified may be replaced by others without prior notice.

IPS-PS-01

XXX

XX

XX

XX

XX

XX

XX

XX

XX

3Mtr.

XX

XX

XX

