

APPLICATIONS

- Liquid & gaseous mediums
- Corrosive environments
- Oil & Gas applications
- Chemical & Petrochemical
- Food & Beverages
- Nuclear power plants

FEATURES

- All SS measuring system
- External Zero adjustment
- Electric contact version
- Dry / liquid filled



DIFFERENTIAL PRESSURE GAUGE - IPS-PG-20

DESCRIPTION

General

Design : EN 837-3

Accuracy : $\pm 2.5\%$ of full scale

Ambient temperature : $-40 \dots +65^\circ\text{C}$ [without dampening liquid]
 $-20 \dots +65^\circ\text{C}$ [with dampening liquid]

Service temperature : 200°C max.

Static pressure limits : 2 bar up to 250 mmWC

6 bar above 250 to 600 mmWC

10 bar above 600 to 6000 mmWC

40 bar above 6000 mmWC to 4 bar

60 bar above 4 bar

(Static Pressure Both side)

Material of construction

Sensing element : Diaphragm

Case & Ring material : AISI 304 SS (Bayonet type)

Diaphragm : AISI 316L SS

Chamber : AISI 304 SS

Fastener : AISI 304 SS

Movement mechanism : AISI 304 SS

Dial : Aluminum, black graduation on white background

Pointer : Micro-zero adjustable, aluminum, black powder coated

Gaskets & filling plug : Neoprene

Window : Shatterproof Safety Glass

Standard version

Dial size : DN100 / DN125 / DN150

Range : 25 mbar...0...25 bar

Mounting pattern : Direct, Bottom connection

Process connection : $\frac{1}{4}$ " NPT (F) x 2 Nos.

Ingress protection : IP 65

Execution : Dry / Dry but fillable

Filled versions

Glycerin

Accuracy : $\pm 4.0\%$ of full scale

Dampening liquid : Glycerin 99.7%

Electric Contact version

Accuracy : $\pm 4.0\%$ of full scale

Window : Poly carbonate dome

Switch : 1NO; Make contact

Dampening liquid : Dielectric oil [Optional]

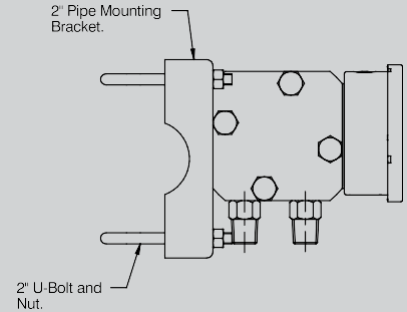
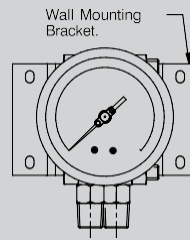
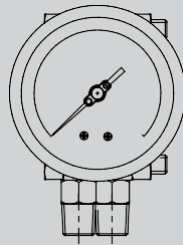
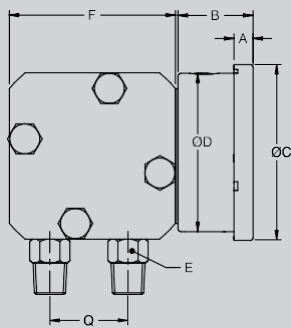
Temperature effect

When temperature of the measuring system deviates from reference temperature ($+20^\circ\text{C}$) :

max error $\pm 0.4\%$ / 10K of true scale value.

DIMENSIONAL DRAWING

Direct bottom



NOTES
1. Drawing not to scale. All dimensions are in mm.

DN	A	B	ØC	ØD	E	F
100	12	48	111	100	A/F-22	Sq. 2.88
150	15	48	161	149	A/F-22	Sq. 2.88

HOW TO ORDER

MODEL

IPS-PG-20 Single Diaphragm Differential Pressure

IPS-PG-20

Gauge DIAL SIZE

D4 4" / 100 mm **D6** 6" / 150 mm

XX

MOUNTING

M1 Direct bottom **M2** Direct bottom with Back flange **M5** Center back with front flange
M4 Bottom with Yoke/2" Pipe mounting bracket

XX

CONNECTION

P24 ¼" NPT (F) **P07** ½" BSP (M) **P08** ½" NPT (M)
P20 M20 x 1.5 mm (M)

XX

CASE FILLING

F1 Dry **F2** Dry but fillable **F3** Glycerin filled
F4 Silicon oil filled **F5** Dielectric oil filled

XX

WETTED PARTS

S01 AISI 304 SS **S02** AISI 316 SS **S03** AISI 316L SS
S05 Monel 500

XX

INGRESS PROTECTION

I1 IP 65 **I6** IP68

XX

RANGE

0 - 10 bar Please mention range required with the measurement unit
 [ANI offer in all types of National & International measurement units, e.g. kg/cm², psi, kPa, etc. with single or dual scales]

ELECTRIC CONTACT

N01 Magnetic contact - 1 NC **N02** Magnetic contact - 1 NO **N03** Magnetic contact - 1 NC / 1 NO
N04 Magnetic contact - 2 NC **N05** Magnetic contact - 2 NO **N06** Magnetic contact - 1 NO / 1 NC
N07 Inductive contact - 1 NC **N08** Magnetic contact - 1 NO **N09** Inductive contact - 1 NC / 1 NO
N10 Inductive contact - 2 NC **N11** Inductive contact - 2 NO **N12** Inductive contact - 1 NO / 1 NC
N13 1 SPDT **N14** 1 DPDT **N15** Booster relay for 5A output

XXX

OTHER OPTIONS

E16 5 - point calibration certificate **E31** Custom designed dial **E32** Dial tag marking
E17 Material test certificate 3.1 **E21** Material test certificate 2.2 **E28** SS tag plate, AISI 316 SS
E27 SS tag plate, AISI 304 SS **E33** AISI 316 SS case & ring **E46** External Zero Adjustment
E01 Shatterproof Glass

XX



IndustriX Precise Solutions Private Limited

Room No – 303, Bhumika Residency, Plot No-21, Sector-20, Roadpali, Kalamboli, Panvel (Tal.), Raigad (Dist.), Maharashtra, India – 410218.

Mobile: +91 99309 98399 / +91 99674 97447

E-mail: admin@ipspl.in / sales@ipspl.in Website: www.ipspl.in

CIN : U52399MH2021PTC368555